



INFOSTUDIO
DATA-DRIVEN GRAPHICS

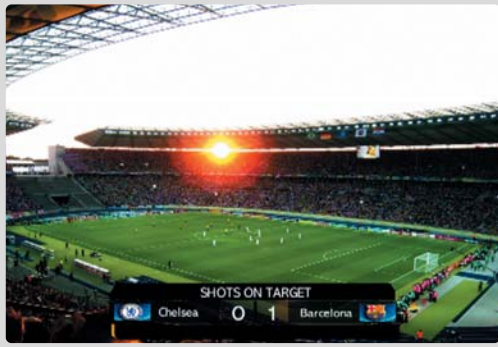
Live Sports Pack

A solution with specific functions and tools to broadcast sports events.

The Live Sports Pack is an infographics production solution with specific functions and tools to broadcast sports events. An integrated system allows the real-time broadcasting of statistics, using a very simple process both to those who collect the data and to those who broadcast them. Live Sports Pack works with two applications: Statistics Console, which collects, manages and updates the statistics through a touch screen interface, and Broadcast Console, which broadcasts the graphics with the information provided by the Statistics Console. Both applications work in real time and in an integrated way, through a network. Currently, these applications are customized for football and basketball programming.

Advantages

- Thanks to the pre-production of the sports events, the directing crew already has important information to air immediately and before the broadcasting of the event itself begins.
- Another great advantage of this product is that it allows the collection of large data volumes of a given sports event, in a simple manner and using very few resources. The collecting/broadcasting integration is immediate.
- The tools also allow you to simultaneously publish several graphical elements without losing stability and without compromising the system's performance.
- To sum up, management and automation are very easy, eliminating the need for specialized operators and specific training. The simple, intuitive interface is adapted to the sports programming's special needs and situations. Viewers have real-time access to the statistics, which add dynamics to the broadcasting of sports events and make it more informative.



TOOLS

Score/Times

Sports markers for football and basketball, which can be connected with the stadiums' scoreboards.

Using this tool, you can automatically collect and display the match time (including the overtime) and the scores (simple, with scorers, during the intermission, with match time, at the end of the match, etc).

Match

Automatic display of the graphical elements related to the match's development, with the following components:

- match presentation (site, teams, retrospectives, weather)
- team formation and tactical layout
- referees
- penalty-kick tiebreaker scoreboard

Players

Display of the graphical elements related to the players' data, including:

- player information
- player statistics (goals, attacks, shots on target, recoveries, defenses, fouls, cards, etc)
- cards
- player comparison using individual statistics

Broadcasting

Automatic display of the graphical elements related to the sports event's general information, with several components:

- personalities area
- production team area
- replays (standard and/or in reverse angle)
- technical data
- overtime

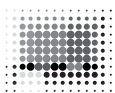
Teams

Display of the graphical elements related to the team's data, with the following components:

- team personalities area
- substitutions
- team statistics (goals, attacks, shots on target, fouls, cards, etc)
- statistics charts (1st half, 2nd half, ending)

ADD-ONS

THIS PACK BASIC VERSION INCLUDES THE STATISTICS CONSOLE AND THE BROADCAST CONSOLE FOR FOOTBALL OR BASKETBALL. AT ANY MOMENT, THE SAME VERSION FOR FOOTBALL OR BASKETBALL CAN BE ADDED SEPARATELY, AS WELL AS THE SPORTS MANAGER PACK (CHECK THIS PRODUCT'S SHEET).



INFOSTUDIO
DATA-DRIVEN GRAPHICS

